

CONFEDERACY

Postal History



1659



1660

- 1659 ☒ **Confederacy, [Georgia] THOMASTON Ga. DEC 24**, postmark, matching “PAID” and “5” on fancy red cameo Woodson & Redding Dry Goods corner card, addressed to Griffin GA, eye catching and scarce; slight reduction at left just misses cameo corner card, minor extraneous manuscript ink through postmarks, Very Fine. Estimate \$500 - 750

- 1660 ☒ **Confederacy, [South Carolina] Charleston**, black circular “CHARLESTON S.C. MAY 4 1860 30” postmark on blue unpaid folded cover addressed to Nantes, France; manuscript “Africa” at top, proper New York and French exchange marks and transit marks; horizontal file fold at center, Very Fine, *extremely scarce*. Estimate \$200 - 300



1661



1662

- 1661 ☒ **Confederacy, [Virginia] Evansport Va Nov 20 1861**, manuscript postmark and matching “Due 5” on buff cover addressed to Thomasville NC; docketed at left “Corp. H. D. Perry 12th Regt of N.C Vols”, Evansport is a very scarce town, the PO was open for only 7 years and given a rarity factor of 8 (on a scale of 0 to 10) by Helbeck; no handstamp postmarks recorded in the new CSA Handbook; cover very slightly reduced at right and minor soiled spots, Fine. Estimate \$200 - 300

- 1662 ☒ **Confederacy, Military courier cover**, brown cover addressed to Mrs. Rose Waterhouse, San Augustine Texas in the hand writing of Brig. Genl. Richard Waterhouse, manuscript “Politeness of Sgt. Price” at bottom left; cover with light wrinkling, Very Fine, *war dated material from Genl Waterhouse is scarce*; signed Brian Green on backflap. Estimate \$200 - 300



1663



1664

1663 ✉ **Confederacy, Dalton, Ga., 1861, 5¢ black (20XU1)**, provisional handstamp at top right, "DALTON JUL 21 1861 Ga" control postmark at bottom left, addressed to Hon. Howell Cobb, Richmond Virginia, entire with opening tears at top, Fine. Scott \$750. Estimate \$400 - 600

1664 ✉ **Confederacy, Memphis, Tenn., 1861, 5¢ red (56X2)**, two covers, five days apart to the same captain, Capt. C. Frazer of the 21st Regiment Tenn. Volunteers in Columbus Ky., one with Memphis 5¢ provisional, cut to shape, and tied by "Memphis Ten. Dec. 18, 1861" c.d.s., other bearing 5¢ green, stone 1-2 (1) tied by December 21, 1861 c.d.s. An interesting pair of Confederate covers showing Confederate general issues replacing the CSA provisional issues; some faults, Fine, ex-Boshwit. Estimate \$1,000 - 1,500

A scarce pair of C.S.A. covers to western Kentucky. Columbus was evacuated by Confederate forces in March 1862.



1665



1666

1665 ✉ **Confederacy, Milledgeville, Ga., 1861, 10¢ black, type I (57XU5)**, provisional handstamp at UR, Milledgeville Apr 14 control postmark at top left of orange entire addressed to Lexington GA, Very Fine; 1996 CSA certificate. Scott \$800. Estimate \$500 - 750

1666 ✉ **Confederacy, Nashville, Tenn., 1861, 5¢ violet brown (61X5)**, single, large margins to touching along the right side, placed upside down and tied by blue Nashville Ten postmark on buff cover addressed to Shelbyville Tenn, matching "PAID" also inverted to left of stamp; cover with sealed tear at top away from stamp, F.-V.F., extremely scarce. Scott \$4,250. Estimate \$2,000 - 3,000



1667



1668

1667 ☒ **Confederacy, New Orleans, La., 1861, 5¢ red brown (62X4)**, position 39, large margins all around, mottled Second Printing impression on blue paper, tied by bold "New Orleans La. 19 Oct." c.d.s. on 1861 cover to Port Gibson Miss.; part of backflap removed, Very Fine and choice usage, ex-Emerson, Brooks. Scott \$425. Estimate \$400 - 600

1668 ☒ **Confederacy, New Orleans, La., 1861, 5¢ red brown on bluish (62X4)**, single, ample to large margins, tied by light strike of double circle 1861 New Orleans La postmark on locally addressed cover, stamp placed over blue crayon manuscript "5", due to addressee (Caroll Hoyer & Co) this cover was probably brought into New Orleans via riverboat; cover with some flap tears from removal of wax seal and opening, Very Fine; signed Brian Green. Scott \$425. Estimate \$300 - 400



1669



1670

1669 ☒ **Confederacy, 1861, 5¢ green (1)**, single, clear to very large margins, manuscript "X" cancel on **wallpaper cover** addressed to "Lamar Co. Texas Pine Creek" (extremely scarce town which did not have a PO until 1871), Very Fine. Scott \$1,500. Estimate \$750 - 1,000

1670 ☒ **Confederacy, 1861, 5¢ green (1)**, tied by 1862 Richmond VA cds on cover addressed to Richmond VA, with "2nd S.C.Regiment/ Col Kennedy"; missing backflap, edge flaws, F.-V.F. Scott \$300. Estimate \$200 - 300



1671



1672

1671 ☒ **Confederacy, 1861, 5¢ green (1)**, single, large margins all around, tied by excellent Richmond Va Jun 5 1862 postmark on small orange cover addressed to Earlysville VA; stamp with minor gum toning, Very Fine. Scott \$300. Estimate \$200 - 300

1672 ☒ **Confederacy, 1861, 5¢ green and 1862, 5¢ blue (1, 2)**, single of each, clear to large margins, tied by blue Petersburg Va. postmark on small brown cover addressed to Warrenton N.C.; interesting two page enclosure datelined Nov. 26 1862, mentions getting all but two of their negroes away and "...it is now confidently expected that Burnside will attack Petersburg and the great fight will be between here and Suffolk."; stamps with light toned spots, 5¢ blue with small corner creases at bottom, F.-V.F. Estimate \$200 - 300



1673



1674

1673 ☒ **Confederacy, 1861, 5¢ dark green (1b)**, single, large margins to touching at right and bottom, tied by Chattanooga Ten Apr 1862 postmark over 3¢ Nesbitt entire indicium, addressed to Charleston SC, *new CSA Handbook gives a 100% premium to a Tennessee town cancel on this general issue*; stamp slightly lifted to see indicium, Very Fine. Estimate \$400 - 600

1674 ☒ **Confederacy, 1861, 10¢ blue (2)**, single, ample to large margins, tied by Savannah Ga. Nov. 25 1862 postmark on anber cover addressed to Hickory Grove GA; stamp with small diagonal crese at top left, cover slightly reduced at left, F.-V.F. Scott \$325. Estimate \$200 - 300



1675



1676

1675 ☒ **Confederacy, 1861, 10c light blue, Paterson printing (2a)**, single, ample to very large margins, tied by Winchester Va postmark on home made cover addressed to Martin's Depot, SC, Extremely Fine. Estimate \$300 - 400

1676 ☒ **Confederacy, 1861, 10c dark blue, Hoyer and Ludwig printing (2b)**, single, large to very large margins including a portion of the stamp at right, tied by Jackson Miss postmark on orange cover addressed to Atlanta Ga and redirected to Milledgeville (Ga) with handstamp arced "DUE 10"; stamp shows defective transfer in UR corner, cover with small waterstain in LL corner, Very Fine. Estimate \$200 - 300



1677



1678

1677 ☒ **Confederacy, 1861, 10c dark blue, Hoyer printing, circular flaw in top left star (2b)**, position 11, single, large margins to touching along left side, tied by double circle Charleston SC postmark on cover addressed to Somerset VA, F.-V.F. Estimate \$200 - 300

1678 ☒ **Confederacy, 1862, 5c blue, Stone 3 (4)**, positions 33 and 34, horizontal pair, left stamp of pair shows joined "CE" of "CENTS", right stamp shows closed "C" of "CENTS", clear to large margins except touching at bottom right and into at right center, tied by Richmond postmark on cover to Macon Ala (scarce town).; cover lightly soiled and without backflap, Fine. Scott \$450. Estimate \$200 - 300



1679



1680

1679 ☒ **Confederacy, 1862, 5¢ light blue (4)**, single, large margins to touching at top, tied by Richmond Va 1862 postmark on bound cover addressed to Riceville VA (scarce town), F.-V.F. Scott \$275. Estimate \$200 - 300

1680 ☒ **Confederacy, 1862, 5¢ light milky blue, Stone 3 (4b)**, horizontal pair, large margins to into above right stamp, tied by large Newton Ga. postmark on exploded brown turned cover addressed to Florence Ga., reverse has "Florence Ga July 1" manuscript postmark and matching "Paid 5" (no handstamp markings noted to Florence in the new CSA Handbook); includes typewritten note from Van Dyke MacBride; usual light cover wrinkling, right stamp with small toned spot, light cover splitting hinged reinforced, F.-V.F. Estimate \$500 - 750



1681



1682

1681 ☒ **Confederacy, 1862, 10¢ rose (5)**, single, clear to large margins except just into at bottom left, tied by Savannah Ga. Paid postmark on buff cover addressed to Elberton GA; stamp and cover with very minor toned spots, F.-V.F. Scott \$800. Estimate \$400 - 600

1682 ☒ **Confederacy, 1862, 5¢ light blue, De La Rue printing (6)**, horizontal pair, large margin at right otherwise into, tied by Charleston S.C. postmark on home made cover made from a map, addressed to Greenville S.C., Very Fine, ex-David Kohn. Estimate \$200 - 300



1683



1684

1683 ☒ **Confederacy, 1862, 5¢ light blue, De La Rue printing (6)**, tied by "Knoxville TN/May/25" cds on cover addressed to Cleveland East TN; small piece out of top, F.-V.F. Scott \$150. Estimate \$100 - 150

1684 ☒ **Confederacy, 1862, 5¢ blue, Archer & Daly printing (7)**, block of six, margins all around including sheet margin at left, affixed over the backflap on the reverse of a legal size cover to Griffin, Ga., canceled two neat strikes Forsythe, Geo cds, 23 Apr (docketed 1863); on the face of the cover, which contained court documents; on the front is another strike of the Forsythe c.d.s., along with a Griffin cds used as a receiving mark (also 23 Apr); small reduction at the right and edge flaws on the other three sides, but a very nice and not commonly seen usage of larger block of the Richmond Print stamps paying six times the letter rate. Estimate \$750 - 1,000



1685



1686

1685 ☒ **Confederacy, 1862, 5¢ blue, Archer & Daly printing (7)**, horizontal pair, clear to large margins, tied by double circle Augusta Ga postmark on cover made from an insurance company printed form, sent to a minister with a pew rent receipt for the Augusta Baptist Church enclosed; stamps and cover with minor toned spots, Very Fine. Estimate \$200 - 300

1686 ☒ **Confederacy, 1862, 5¢ blue, Archer & Daly printing (7)**, horizontal pair, ample to large margins except just touching at left, tied by sans-serif Richmond VA Apr 19 1863 postmark on cover to Loretto VA., manuscript "M. R. H. Garnett, M.C." at top right (member of the first CSA Congress); cover with small tear at top which just misses signature, Very Fine. Estimate \$200 - 300



1687



1688

1687 (✕) **Confederacy, 1863, 10¢ blue, “frame lines” (10)**, single, showing three full frame lines, no line at bottom, tied by bold double circle “Mobile Ala Aug 12 1863” postmark on **FRONT ONLY** addressed to Geneva AL; stamp torn in half prior to usage; front with tear at top (away from stamp), light creases and minor toning, Fine. Catalogued as stamp only. Scott \$1,900. Estimate \$200 - 300

1688 ✕ **Confederacy, 1863, 10¢ milky blue, “frame lines” (10a)**, single, full frame lines at top and bottom, small partial frame line at top left, indistinct black cork cancel at UR, not tied, on brown cover without postmark addressed to Spring Hill AL; manuscript “Via Dalton & Atlanta” at bottom left; plated as “#69 on plate” on reverse; cover with light creases from handling, small scrape on reverse from being pasted down, Fine. Scott \$3,500. Estimate \$1,500 - 2,000



1689



1690

1689 ✕ **Confederacy, 1863, 10¢ blue (11)**, single, left sheet margin, in at left, tied by indistinct blue town cancel on **wallpaper cover** addressed to Mobile Ala, town mark is probably from Alabama; cover with minor edge flaws, stamp with light toning, Fine. Scott \$800. Estimate \$300 - 400

1690 ✕ **Confederacy, 1863, 10¢ blue (11)**, single, large to very large margins including sheet margin at left, tied by just readable Jones Borough Te. Sep 13 postmark on small brown cover addressed to Speedwell Va.; the new CSA Handbook lists a Tennessee town cancel on the stamp as a 200% premium on cover, catalogue value would be \$360; very slightly reduced at left, Very Fine. Estimate \$200 - 300



1691



1692

1691 ☒ **Confederacy, 1863, 10¢ blue (11)**, single, large to very large margins, tied by small double circle Montgomery Ala postmark on brown cover addressed to Greensboro Ala; accompanied by 1961 letter from Van Dyke MacBride to Peter Brannon mentioning the scarcity of this cancel and that this cover was the first one MacBride had seen tying a general issue stamp to a cover. Estimate \$200 - 300

1692 ☒ **Confederacy, 1863, 10¢ blue (11)**, single, very large margins to into at top, tied by 33mm "New Market Va. 19 Jan" postmark (VPHS type 13) on 1864 small brown home made cover addressed to University of Virginia, four page enclosure includes mention that Genl Jubal E- (Early) and portions of his staff as well as a Major on the staff of J. E. Johnson dropped by for dinner before continuing up the valley; cover with light wrinkling, F.-V.F. Estimate \$200 - 300



1693



1694

1693 ☒ **Confederacy, 1863, 10¢ blue (11)**, single, large margins all around, tied by lightly struck Richmond Va postmark on blue cover addressed to "Capt F Sanders, 42 Va Regt, Army N. Va", manuscript "Q M G Office O.B." at top center, two page enclosure, Very Fine. Estimate \$150 - 200

1694 ☒ **Confederacy, 1863, 10¢ milky blue (11a)**, single, ample to large margins, manuscript cancel on exploded brown turned cover with Catawba Station N.C. postmark (scarcer town, Helbeck rarity 4), addressed to "Co. C 28th NC regt, Lane Brigade, Wilcox Division, Richmond Va"; reverse has manuscript cancelled 10¢ blue (12), ample to large margins, horizontal crease at bottom, and is addressed to Catab Station N.C.; diagonal crease through Catawba postmark, F.-V.F. Estimate \$200 - 300



1695



1696

1695 ☒ **Confederacy, 1863, 10¢ greenish blue (11c)**, single, large to very large margins, tied by double circle "Mobile Ala Feb 29" postmark on 1864 blue folded letter addressed to Richmond Va., letter is addressed to Gustavus A. Myers who is requested to get "the enclosed over the borders - It is a family letter from one of Mr. Sumner's daughters to her relations in Ohio ... if you can get it sent by Major Morris or any other safe conveyance", Myers was a lawyer in Richmond at this time, Very Fine, ex-Van Dyke MacBride. Estimate \$200 - 300

1696 ☒ **Confederacy, 1863, 10¢ blue (12)**, single, clear to large margins, tied by sans-serifed Richmond Va postmark on **adversity cover** made from a printed mathematical table, addressed to Clarksville, VA; stamp with small diagonal crease at top right and minor gum toning, Very Fine. Estimate \$200 - 300



1697



1698

1697 ☒ **Confederacy, 1863, 10¢ greenish blue (12c)**, single, ample to large margins except into at top left, tied by double circle Austin Tex 1862 postmark (error in datestamp, should read 1865) on the inside of a turned cover with "Official Business. Inspector General's Office, Trans-Mississippi Department." imprint at top right, addressed to "Brig. Genl James E Slaughter, Chief of Staff, Dist. Tex at Houston", ex-VanDyke McBride. Estimate \$300 - 400

1698 ☒ **Confederacy, 1863, 10¢ green (12e)**, single, very large to huge margins, tied by serifed Richmond Va postmark on buff cover addressed to Greensborough N.C., Very Fine. Estimate \$200 - 300



1699



1700

1699 ☒ **Confederacy, 7-Star Davis and Stephens Flag**, red white and blue patriotic design on cover front bearing U.S. 3¢ dull red (26) tied by "St. Louis Mo. Apr 11 1861" c.d.s. and addressed to Warren R.I.; back with couple edge tears, Fine. Estimate \$500 - 750

A SCARCE EARLY CSA 7-STAR FLAG PATRIOTIC USED ONE DAY PRIOR TO THE START OF THE WAR.

This early Confederate 7-star flag patriotic shows the Confederate leaders and 7 stars for the first 7 of the 11 rebel states.

1700 ☒ **Confederacy, 11 Star Flag patriotic cover**, franked with 1862, 10¢ rose, single, large to very large margins to just into at bottom left, tied by Richmond Va. Jun 18 1862 postmark on cover with six line verse which starts with "To arms! to arms! quick, be ready ..." (new CSA Handbook type F11-16 in black with verse 45), addressed to to GA; enclosure is a letter from a soldier to his sister and describes camp food and life; stamp and cover with water staining and toned spots as normal for a letter originating from a soldier in field, Fine. Scott 5; \$3,000. Bischel 5879. Walcott 3174 var. Estimate \$1,000 - 1,500



1701



1702

1701 ☒ **Confederacy, 11 Star Flag patriotic cover**, franked with 1862, 5¢ light blue, De La Rue printing, horizontal pair, large margins to into at top and right, manuscript cancels, on cover (new CSA Handbook type F11-16, verse 30, imprint 31) addressed to Concord N.C.; cover with small edge flaws and tone/stain spots, Fine. Scott 6; \$1,300. Bischel 5877. Walcott 3174 var. Estimate \$500 - 750

1702 ☒ **Confederacy, 12 Star Flag patriotic cover**, light strike of double circle WYTHEVILLE VA postmark with "A" high, matching "PAID" on red, white and blue cover (new CSA Handbook type F12-4 with verse 41) addressed to Blacksburg (crossed out), no stamp appears to be missing and Wytheville did not use a rate mark on its stampless letters (new CSA Handbook value \$2,500 as patriotic cover); cover slightly reduced at left, tiny portion of top left corner added (not affecting the design), minor edge toning and edge flaws, Fine. Estimate \$1,000 - 1,500



1703



1704

1703 ✉ **Confederacy, 12 Star Flag patriotic cover**, red, white and blue, without postage and apparently hand carried out of the mails to Thomaston Ga, manuscript "I R L" at top right, new CSA Handbook type F12-3 (valued at \$2,000 if properly used); minor toning spots and trivial edge wear, F.-V.F. Bischel 5887. Walcott 3213.

Estimate \$400 - 600

1704 ✉ **Confederacy, c. 1863. letter to Rock Island IL Prison Camp**, U.S. 3¢ (65) tied by blue target with matching "Louisville KY/Apr/24" double circle cds on cover addressed to "Charles L McAlister Prisoner of War/Bar-racks 22/Care of Cpl A J Johnson/Rock Island /Illinois", with blue handstamp "R.I. Barracks/Examined/Prisoner's Letter", listed in Dietz as Rock Island Barracks II, F.-V.F.

Estimate \$200 - 300

Stamps



1705



1706

1705 E **Confederacy, 1861, 10¢ dark blue, flag vignette, lithographed essay, printed by Hoyer and Ludwig**, large margins except into at top; thin spot at top center, otherwise Fine. C.S.A. Catalog E-11a; \$950.

Estimate \$400 - 600

1706 E **Confederacy, 1861, 10¢ blue, flag vignette, lithographed essay, printed by Hoyer and Ludwig (C.S.A. Catalog E-11)**, very large margins; minor toning at left, otherwise Very Fine. C.S.A. Catalog \$450.

Estimate \$300 - 400



1707



1708



1709



1710



1711

- 1707 (★) **Confederacy, 1861-62, General Issues complete for period (1-7)**, unused without gum, margins into; small faults, 5¢ rose with toned spots also, V.G.-Fine. Scott \$2,036. Estimate \$300 - 400
- 1708 ★ **Confederacy, 1861, 10¢ blue (2)**, o.g., lightly hinged, one of the freshest and choicest examples we have ever offered, with extraordinary rich color printed on fresh white paper, a great stamp in a quality rarely found on this issue, Extremely Fine. Scott \$300. Estimate \$300 - 400
- 1709 ○ **Confederacy, 1861, 10¢ blue (2)**, neatly struck town cancellation, outstanding quality, beautifully centered stamp with gorgeous color, Extremely Fine. Scott \$200. Estimate \$200 - 300
- 1710 ★ **Confederacy, 1861, 10¢ light blue (2a)**, o.g., lightly hinged, unbelievably fresh and choice stamp, blue ink handstamp on reverse, Very Fine; 2012 P.F. certificate. Scott \$300. Estimate \$200 - 300
- 1711 ○ **Confederacy, 1861, 10¢ light blue (2a)**, pretty blue cds cancellation, wide right sheet margin single with delightful bright color, a flawless high quality stamp, Very Fine. Scott \$200. Estimate \$200 - 300



- 1712 ★ **Confederacy, 1862, 2¢ green (3)**, o.g., barest trace of hinge (appears never hinged), among the freshest examples of this terribly elusive stamp one could imagine, with nicely balanced margins and gleaming bright color, a true condition rarity in a wonderful state of preservation, Very Fine to Extremely Fine. Scott \$900. Estimate \$750 - 1,000



- 1713 ★ **Confederacy, 1862, 5¢ blue (4)**, o.g., previously hinged (natural gum crease at lower right), tremendous example with sensational rich color and detailed impression, Very Fine; clear 2003 P.F. certificate. Scott \$750. Estimate \$300 - 400



1714



1715

- 1714 ★田 **Confederacy, 1862, 5¢ blue, Stone 2 (4)**, bottom right corner margin block of 6, full o.g.; block with toned spots, creases and wrinkling, left center stamp with small hole from paper drop out, otherwise Fine. Scott \$1,750.
Estimate \$300 - 400
- 1715 ▲ **Confederacy, 1862, 5¢ blue (4)**, horizontal pair, lightly struck Alabama town cancellation, a spectacular multiple with gorgeous rich color, scarcer than it's modest catalog value would indicate, Very Fine. Scott \$550.
Estimate \$400 - 600



1716



1717

- 1716 ○ **Confederacy, 1862, 10¢ rose (5)**, neat town cancel, possibly Staunton Va., clear to large margins, F.-V.F.
Estimate \$250 - 350
- 1717 ○ **Confederacy, 1862, 10¢ carmine (5a)**, neat black town cancellation, respendent example of this scarce and often misidentified color variety, featuring an incredible depth of color and nicely balanced margins, just a great stamp; minute thin speck at lower right, otherwise Extremely Fine. Scott \$1,900.
Estimate \$750 - 1,000
- 1718 ★○ **Confederacy, 1862, 5¢ light blue, De La Rue printing and 5¢ blue, Archer & Daly printing (6, 7)**, unused - four blocks, 14 singles and one vertical pair, used - 32 singles and 10 pairs, plus one counterfeit; condition varies, Fine (photo on web site).
Estimate \$200 - 300



1719



1720



1721

- 1719 P **Confederacy, 1862, 5¢ black, trial color die proof on thick glazed card (6TC1c)**, 93 x 61mm, stamped "Nov. 28, 1864" at top left, manuscript "6320" at top right and "JL" at bottom right; light edge soiling, not uncommon for glazed cards, otherwise Very Fine. C.S.A. Catalog 6-TCDD var.; \$2,750. Estimate \$1,500 - 2,000
- 1720 P **Confederacy, 1862, 5¢ black, trial color die proof on thick glazed card (6TC1c)**, 93 x 60mm, without imprint, Extremely Fine. Scott \$900. Estimate \$750 - 1,000
- 1721 P **Confederacy, 1862, 5¢ black, trial color die proof on thin glazed card (6TC1c)**, 512 x 55mm, small hinge remnant on reverse, Very Fine. Estimate \$750 - 1,000



- 1722 ★★ **Confederacy, 1862, 5¢ light blue, De La Rue printing (6)**, complete pane of 100, o.g., stamps never hinged, couple hinge remnants in the margins; left margin slightly uneven and slight reduced, small tear in right margin, light crease in bottom margin, stamps with typical light creases or wrinkling, Very Fine. Catalogued as 25 blocks of four without any premium for NH. Scott \$2,125. Estimate \$1,000 - 1,500



1723



1724

- 1723 ★★田 **Confederacy, 1862, 5¢ light blue, De La Rue printing (6)**, bottom right block of 30 (5x6), o.g., never hinged; many stamps with light bends or creases as usual, small stain in bottom right corner margin away from stamps, Very Fine. Scott \$624. Estimate \$400 - 600
- 1724 ★★田 **Confederacy, 1862, 5¢ light blue, De La Rue printing (6)**, complete pane of 100, o.g., never hinged; small tear in top left selvedge, stamps with normal bends, creases or wrinkling, Very Fine. Catalogued as 25 blocks of four without any premium for NH. Scott \$2,125. Estimate \$1,000 - 1,500
- 1725 ★ **Confederacy, 1863, 2¢ brown red (8)**, grouping on stock sheet of 21 o.g. singles, 7 singles and one stained strip of four without gum; most with four margins, many appear sound, but some with small faults such as creases, otherwise Fine. Scott \$2,015 (photo on web site). Estimate \$300 - 400



1726



1727

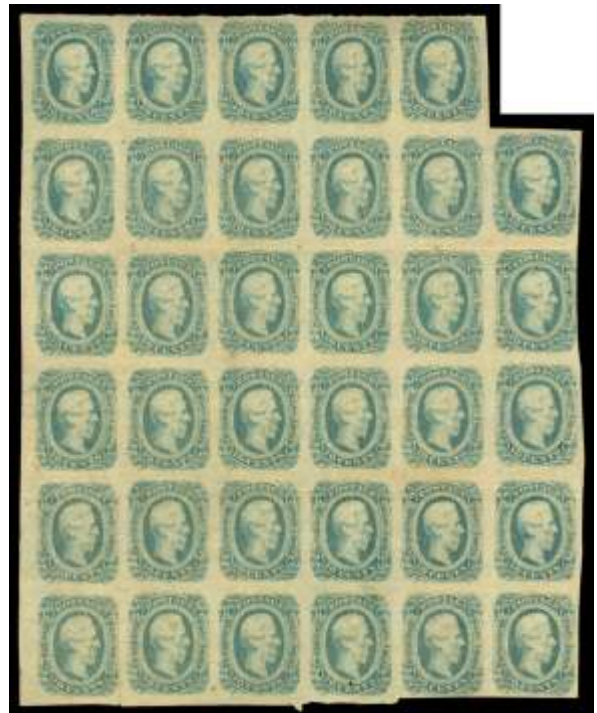


1728

- 1726 ★ **Confederacy, 1863, 10¢ blue, "T-E-N" (9)**, o.g., barest trace of hinge (appears never hinged), astounding GEM quality example of this ridiculously scarce and undervalued stamp, beautifully centered amid extra large margins, with bold prooflike color, certainly one of the nicest examples of the scarce "T-E-N" issue deserving placement in the finest collection; insignificant trace of faint horizontal crease of little consequence on a stamp of this beauty, otherwise Extremely Fine. Scott \$900. Estimate \$750 - 1,000
- 1727 ○ **Confederacy, 1863, 10¢ blue, "T-E-N" (9)**, manuscript cancellation removed, desirable example of this elusive stamp, looks unused at first glance, with warm rich color, Fine. Scott \$300. Estimate \$200 - 300
- 1728 ○ **Confederacy, 1863, 10¢ blue, "frame lines" (10)**, manuscript cancelled, shows partial frame lines on three sides; tiny thinning along uneven edges, probably torn rather than cut, otherwise Fine. Scott \$850. Estimate \$200 - 300



1729



1730

- 1729 (★)田 **Confederacy, 1863, 10¢ blue (11)**, complete left pane of 100 with full Archer & Daly imprint and plate No.2, unused without gum; many stamps with creases as it was folded in eighths at one time, LL horizontal pair with scrape and some other flaws including two small piece out of right selvedge and slight soiling, otherwise Fine. Scott \$2,125. Estimate \$400 - 600
- 1730 ★★田 **Confederacy, 1863, 10¢ blue (12)**, block of 35 (row of four and block of 6x5), o.g., never hinged; many stamps with creases or wrinkling as block was folded in sixths at one time, Fine. Catalogued as 8 blocks of four and 3 single stamps without any premium for NH. Scott \$728. Estimate \$200 - 300



- 1731 ★★/★田 **Confederacy, 1863, 10¢ light blue (12b)**, bottom margin block of 30 with "Bank Note Engrave Richmond, Va. No. 4" imprint at bottom, imprint slightly trimmed away, o.g., many never hinged; left vertical strip of three with paper adherence, few stamps with light bend or creases, otherwise F.-V.F. Scott \$738. Estimate \$300 - 400



- 1732 (★)田 **Confederacy, 1863, 20¢ green (13)**, bottom block of 20 with "Archer & Daly, Richmond, Va." imprint, appears to be without gum; three tiny pieces out at bottom and small tear in imprint, two stamps with small toned spot and a couple others with light creases, Fine, *extremely scarce, unpriced as a full imprint block of 20 in either Scott or the new CSA Handbook.* Estimate \$500 - 750



- 1733 ★★/★田 **Confederacy, 1863, 20¢ green (13)**, block of 28 (7x4), o.g., twelve stamps appear never hinged; light wrinkling or bends affect most stamps, otherwise F.-V.F. Scott \$1,380. Estimate \$500 - 750



- 1734 ★★/★田 **Confederacy, 1862, 1¢ deep orange, unissued (14a)**, top margin block of 20 (10x2), o.g., all never hinged except five stamps with hinge remnants; nine stamps with creases or bends, light soiling in right margin, otherwise F.-V.F., *scarce multiple.* Scott \$2,600. Estimate \$750 - 1,000

U.S. POSSESSIONS AND U.N.

Canal Zone



1735



1736



1737

- 1735 ★ **Canal Zone, 1904, 2c rose (1)**, slightly disturbed o.g. from interleaving, small hinge remnant, Fine. Scott \$650. Estimate \$300 - 400
- 1736 ★★ **Canal Zone, 1904, 5c blue (2)**, horizontal pair, o.g., never hinged, Fine; 1975 A.P.S. cert signed by DeVoss. Scott \$600. Estimate \$300 - 400
Scott does not catalogue this stamp in NH condition.
- 1737 ○ **Canal Zone, 1904, 10c yellow (3)**, very lightly cancelled, F.-V.F.; 1979 A.P.S. cert. signed by DeVoss. Scott \$240. Estimate \$150 - 200



Ex 1738



1739



1740

- 1738 ★ **Canal Zone, 1904, 1¢-10¢ overprinted U.S. complete (4-8)**, o.g., most with small hinge remnants, 2¢ and 5¢ with tropicalized gum; 1¢ with short perf at top, 5¢ with toned perfs at top, Fine. Scott \$485. Estimate \$150 - 200
- 1739 ○ **Canal Zone, 1904, 5c blue, "PANAAM" at right (12 var.)**, light magenta machine cancel; creased, small thin spots, otherwise Fine. Scott \$900. Estimate \$200 - 300
- 1740 ★ **Canal Zone, 1904, 10c yellow, spaced "A L" in "CANAL" variety (13 var.)**, o.g.; pencil notation on gum, Fine, *only 200 examples exist.* Scott \$200. Estimate \$150 - 200



1741



1742



1743

- 1741 ★ **Canal Zone, 1912, 2c vermilion & black, inverted center, overprint reading down (39e)**, tropicalized o.g. (light natural gum crease at top), Very Fine; 2012 Weiss photo cert. as disturbed OG. Scott \$650. Estimate \$400 - 600
- 1742 ★ **Canal Zone, 1920, 50c orange & black (58)**, o.g., lightly hinged, F.-V.F. Scott \$260. Estimate \$150 - 200
- 1743 ★ **Canal Zone, 1921, overprinted issue complete, plus 5c with overprint reading down (60-66, 62a)**, o.g., both 5c, 24c and 50c tropicalized, F.-V.F. Scott \$366. Estimate \$150 - 200



1744



Ex 1745



1746

- 1744 ★ **Canal Zone, 1921, 2c carmine, inverted overprint, reading down (61a)**, tropicalized o.g., F.-V.F. Scott \$200. Estimate \$100 - 150
- 1745 ★ **Canal Zone, 1924, 5c-1b Arms of Panama, unissued values complete (69 var.)**, seven different stamps, part or tropicalized o.g., F.-V.F. Scott \$2,450. Estimate \$1,000 - 1,500
Footnote in Scott says that only 600 sets were printed of which 400 were given to the UPU, "only a small number of sets appear to have reached the public market".
- 1746 ★ **Canal Zone, 1924, 1c deep green, flat "A", "ZONE" inverted (71b)**, disturbed o.g., natural straight edge at right as this variety only occurs in position 30, F.-V.F. Scott \$350. Estimate \$200 - 300



- 1747 ★★/★ **Canal Zone, 1925-28, 2c-\$1 definitives complete, sharp "A's" (84-95)**, o.g., 10c never hinged; 17c and 20c tropicalized, \$1 with hinge remnant, F.-V.F. Scott \$512. Estimate \$300 - 400



1748



1749

1748 ★★ **Canal Zone**, 1926, 5¢ dark blue, sharp “A”, “ZONE CANAL” (86e), o.g., never hinged, Fine, *only 90 examples printed and most are centered to the right.* Scott \$350. Estimate \$200 - 300

1749 ★★田 **Canal Zone**, Airmail Officials, 1941-42, 5¢-\$1 complete, type I (CO1-CO7), blocks of 4, o.g., never hinged, F.-V.F. Scott \$425 for hinged. Estimate \$200 - 300



Ex 1750



Ex 1751

1750 ○ **Canal Zone**, Airmail Officials, 1941, 5¢-40¢ complete, type II (CO8-CO12), cancelled to order as always, 5¢ o.g. with gum wrinkles, balance without gum; 30¢ with a small thin, otherwise F.-V.F. Estimate \$300 - 400

1751 ○ **Canal Zone**, Airmail Officials, 1941, 5¢-40¢ complete, type II (CO8-CO12), bright and fresh, F.-V.F. Scott \$855. Estimate \$250 - 350



1752



1753



1754

1752 ★ **Canal Zone**, Postage Due, 1914, 10¢ rose carmine (J3), o.g., hinged, fresher than many, Fine. Scott \$1,000. Estimate \$400 - 600

1753 ★ **Canal Zone**, Postage Due, 1925, 10¢ orange, “POSTAGE DUE” double (J17a), o.g., hinged, Fine. Scott \$800. Estimate \$400 - 600

1754 ★★ **Canal Zone**, Postage Due, 1925, 10¢ rose red, double overprint (J20c), o.g., never hinged, normal centering for this, V.G.-Fine, *only one pane of 100 was found.* Estimate \$200 - 300

Cuba



1755



1757

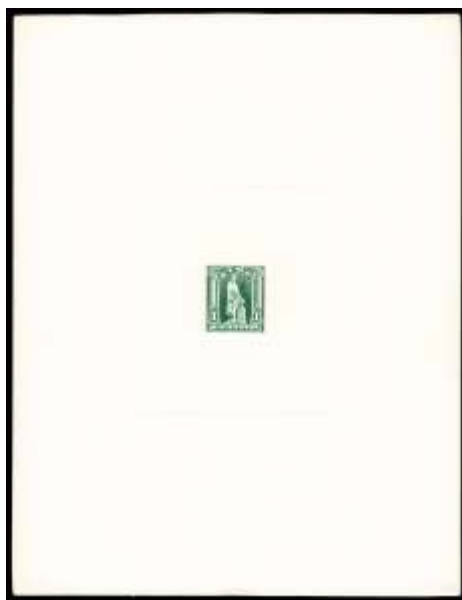
- 1755 ○ **Cuba, 1898-99, Puerto Principe Provisional, 5¢ on 8m blue green (220)**, surcharge corresponding to the Fifth Printing made in January 11, 1899, and position four in the surcharge setting of five subjects, Puerto Principe January 1899 circular datestamp; faint toning spots, F.-V.F., *An extremely rare stamp. A total of 300 of the 5¢ surcharge stamps was made, but it is not known exactly how many of each base value were surcharged.*; Signed H. Bloch, and accompanied with 1973 Friedl Expert Committee certificate. Edifil 22C; €2,450 (\$3,180). Scott \$2,000.
Estimate \$750 - 1,000

The District of Puerto Principe was forced to issue surcharged postage stamps in December 1898, when supplies of five denominations of U.S. Administration stamps were not available. These Puerto Principe Provisionals were printed by one man, after nightfall, at the offices of the local newspaper.

- 1756 ★ **Cuba, 1899, 1c to 10c surcharges (221, 223-226)**, plate number strips of 3, comprising 221 (plate 766), 223 (plate 753), 224 x3 (plates 448, 449 & 450), 225 (plate 408) & 226 (plate 306), o.g., F.-V.F. Scott \$927 (photo on web site).
Estimate \$300 - 400

- 1757 (★) **Cuba, 1899, 10c on 10¢ brown, type II (226A)**, without gum; trivial bottom left corner perforation crease mentioned just for the sake of accuracy, F.-V.F., *Edifil Catalogue states that only 100 were made*; 2007 Weiss certificate. Edifil 28A; €5,300 (\$6,890). Scott \$6,000.
Estimate \$750 - 1,000

In 1899 the United States Post Office Department prepared one pane of 100 only for display at the Paris Exposition of 1900.



- 1758 P **Cuba, 1899, 1c to 10c complete, large die proofs (227-231)**, in issued colors, Very Fine, *rarely offered*. Edifil 30-34.
Estimate \$1,000 - 1,500

Large die proofs were drawn by the Bureau of Engraving & Printing, and are on paper about 60 x 75 mm, mounted on large cards. They are listed in the Handbook of Cuba Part II: U.S. Administration by Jones-Roy.



- 1759 P** **Cuba, 1899, 1c to 10c complete, small die proofs (227-231)**, in issued colors, without gum; 1¢ minor toning spots, Very Fine. Edifil 30-34. Estimate \$300 - 400

Small die proofs were drawn by the Bureau of Engraving & Printing, and are on paper whose margins are usually no more than 3 to 5 mm larger than the design imprinted. They are listed in the Handbook of Cuba Part II: U.S. Administration by Jones-Roy.



- 1760 ★** **Cuba, 1899, 2c carmine (228b)**, booklet pane of 6, o.g., appears lightly hinged, and shows some light gum disturbance; few separated perforations at top, F.-V.F.; 2013 PF certificate. Edifil 31C; €2,000 (\$2,600). Scott \$5,000. Estimate \$1,000 - 1,500

Guam



- 1761 ★ **Guam, 1899, 8¢ violet brown, Paris Exposition Special Printing (7 var.),** o.g., hinge remnant, choice example of this rarely offered special printing, missing from even the most advanced collections; two small tears and a tiny thin spot at upper right, Fine; signed in pencil "Spl. Surch./J.M. Bartels" notation, 2008 P.F. certificate. Scott \$1,000. Estimate \$200 - 300

Hawaii



- 1762 (★) **Hawaii, 1857, 5¢ manuscript surcharge on 13¢ dark red (7),** without gum; defective but an extremely scarce stamp, worth an aggressive bid, V.G.; signed Bloch, with Livingston guarantee. Scott \$7,000. Estimate \$500 - 750



- 1763 ★★ **Hawaii, 1893, 12¢ red lilac, black overprint (69),** left margin single, o.g., never hinged, handsome example with lively color, F.-V.F.; 2013 P.F. certificate. Scott \$575. Estimate \$300 - 400

Philippines



1764



1765



1766



1767

- 1764 ★ **Philippines, Airmail, 1926, 1c//1p Madrid Manila Flight (C1-6, C9-12 & C17)**, o.g., bright colors, F.-V.F.; each signed A. Brun, Champion. Scott \$1,055. Estimate \$350 - 500
- 1765 (★) **Philippines, Airmail, 1926, Madrid-Manila Flight, 16c Sampson, violet overprint (C7)**, unused without gum; reperfed at left and toned with a light diagonal crease, otherwise Fine, *rare, only 300 issued*; 1973 & 2007 P.F. certificates. Scott \$3,250. Estimate \$600 - 800
- 1766 (★) **Philippines, Airmail, 1926, Madrid-Manila Flight, 16c Sampson, red overprint (C8)**, unused without gum, typical centering; all-over toning, otherwise Fine, *rare, only one sheet of 100 was issued*; 2007 PF certificate. Scott \$5,000. Estimate \$1,000 - 1,500
- 1767 ★ **Philippines, Airmail, 1926, 2p Madrid-Manila Flight (C13)**, full o.g., exceptionally fresh, Fine; Manila dealer's handstamp on reverse. Scott \$600. Estimate \$200 - 300



1768



1769

- 1768 ★ **Philippines, Airmail, 1926, 4p Madrid-Manila Flight (C14)**, full o.g., fresh and Fine; signed Kessler. Scott \$750. Estimate \$200 - 300
- 1769 (★) **Philippines, Airmail, 1926, 10p Madrid-Manila Flight (C15)**, unused without gum, exceptionally well centered, fresh and Very Fine. Scott \$1,350. Estimate \$500 - 750



- 1770 ★ **Philippines, Airmail, 1926, 26c Madrid-Manila Flight (C16)**, somewhat tropicalized o.g., bright color and quite well centered for this; few lightly toned perf tips at upper right, otherwise F.-V.F., *rare, only 100 issued*; signed Kessler with 2006 P.F. certificate. Scott \$6,250. Estimate \$2,000 - 3,000

Puerto Rico



- 1771 ★ **Puerto Rico, Airmail, Semi-Official, 1941, Aerovias Puerto Rico, 1¢-\$1 complete imperforate (Storer A659a-666a)**, o.g., lightly hinged, fresh, Very Fine. Storer \$700. Estimate \$350 - 500
- 1772 (★) **Puerto Rico, Rectified Spirits, 1942, ½¢-\$1 complete (RE33-RE51)**, without gum as issued, beautiful set, as fresh & bright as the day they were printed, for the collector wanting the very best, F.-V.F. Scott \$816 (photo on web site). Estimate \$200 - 300

United Nations



- 1773 ★ **United Nations, Airmail Postal Card, 1959, 4¢+1¢ maroon, three surcharged varieties (UXC2c)**, includes inverted surcharge, inverted misplaced surcharge, and double surcharge one inverted, first and third listed but unpriced in Scott, uncommon set, Very Fine. Estimate \$300 - 400

End of the Second Session